

# MB8 COIN QT WALLET ENCRYPT

ENCRYPT IN 8 EASY STEPS

WINDOWS  
USER GUIDE 3

The following guides are available at <https://mb8coin.io/windows-qt-wallet/>

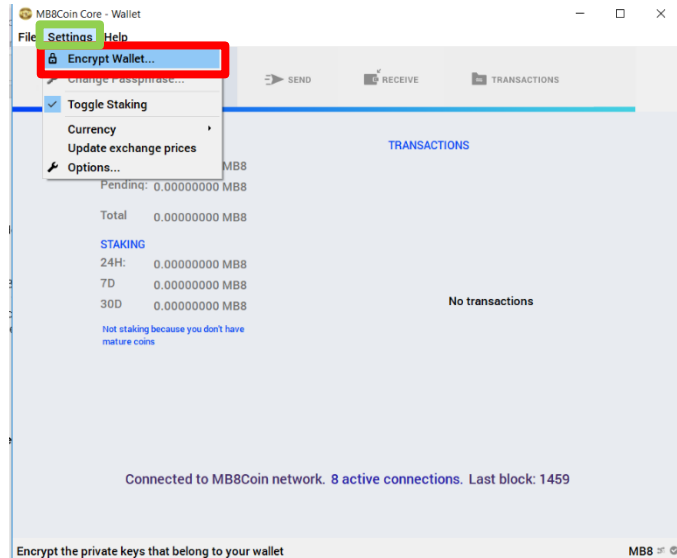
- Windows Guide 1 - Installing QT Wallet
- Windows Guide 2 - Transferring Web Wallet to QT
- **Windows** Guide 3 - Securing your MB8 Coin QT Wallet
- Windows Guide 4 - Extra Guidance

## Step 1

- Open your MB8 Coin QT Wallet on your computer. (for further information on how to download and installation guides, please visit [mb8coin.io](http://mb8coin.io))

## Step 2

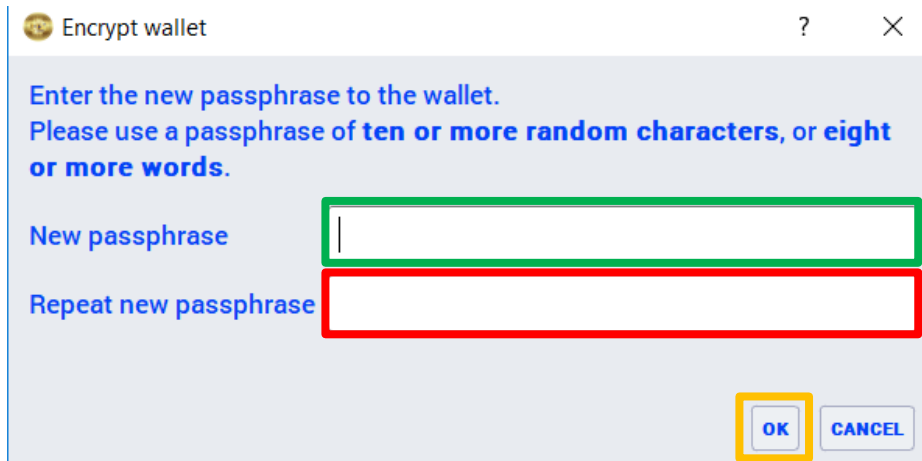
- Go to the settings tab at the top of the MB8 Coin QT Wallet (as highlighted in green) and click Encrypt Wallet... (as highlighted in red)



## Step 3

- In the popup window that loads in the MB8 Coin QT Wallet, please enter a passphrase (highlighted in green) and repeat the passphrase into the box below (highlighted in red). Once you have typed both passwords, please click the OK to continue (as highlighted in orange)

**\*\*\*\*KEEP THIS PASSWORD SAFE\*\*\*\***

A screenshot of the 'Encrypt wallet' dialog box. The dialog has a title bar with a question mark and a close button. The main text reads: 'Enter the new passphrase to the wallet. Please use a passphrase of ten or more random characters, or eight or more words.' Below this, there are two input fields: 'New passphrase' and 'Repeat new passphrase'. The 'New passphrase' field is highlighted with a green border, and the 'Repeat new passphrase' field is highlighted with a red border. At the bottom right, there are two buttons: 'OK' and 'CANCEL'. The 'OK' button is highlighted with an orange border.

## Step 4

- In the popup window, please confirm you are happy to proceed with the encryption of the wallet if you are happy please press yes to continue with the encryption (as highlighted in green)

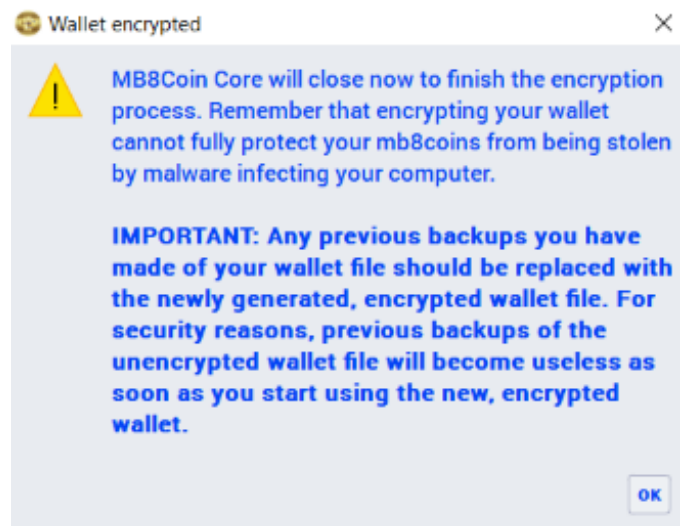
**Note: Never give you passphrase out to anyone, including MB8 Coin, Multibuy or Blockchain Scotland our support staff will never ask for this.**

**If you lose/forget your passphrase our support team cannot recover this for you, please keep this safe.**



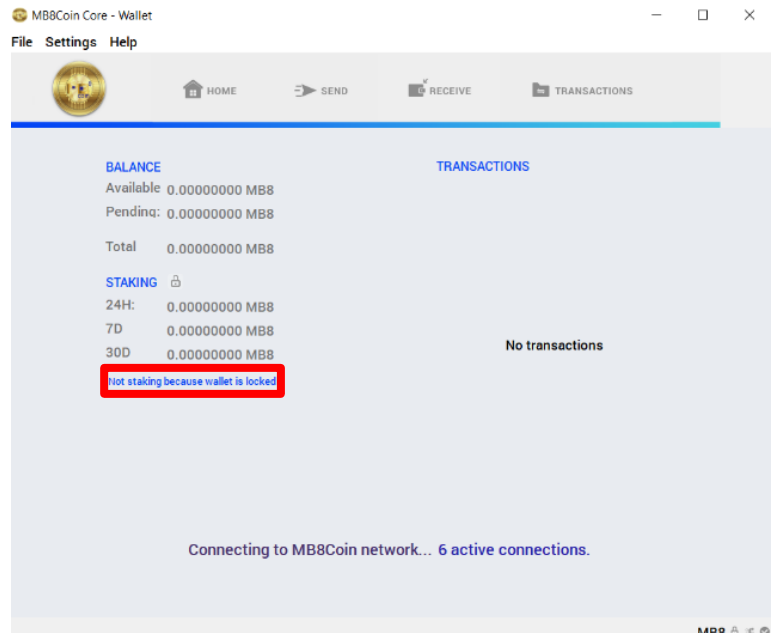
## Step 5

- To complete encryption, your MB8 Coin QT Wallet needs to be restarted, once you have read the warning notification that appears click OK (as highlighted in green) to close the MB8 Coin Wallet.

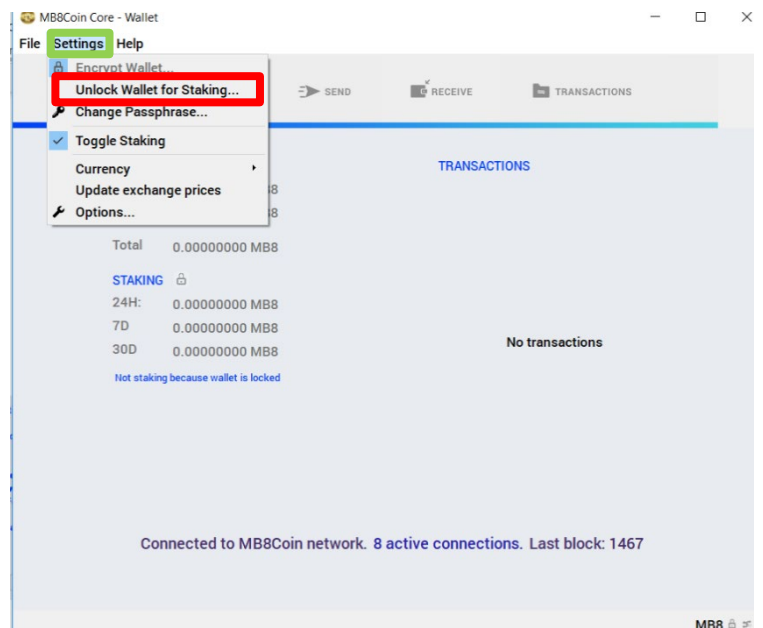


## Step 6

- You may now re-open the MB8 Coin QT Wallet; this will now be encrypted and locked. The message showing this can be seen below the balances (as highlighted in red)

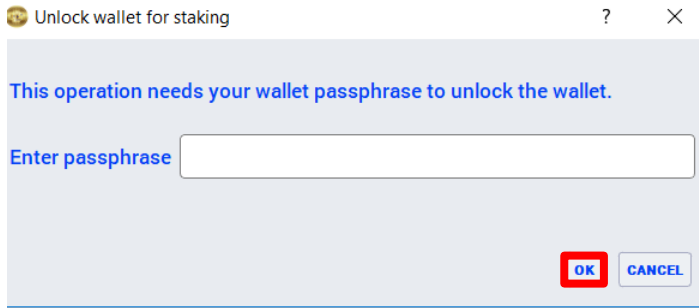


- To unlock your wallet to enable staking or to send funds, please go to the settings tab at the top of the MB8 Coin QT Wallet (as highlighted in green) and Click Unlock Wallet for Staking... (as highlighted in red)



## Step 7

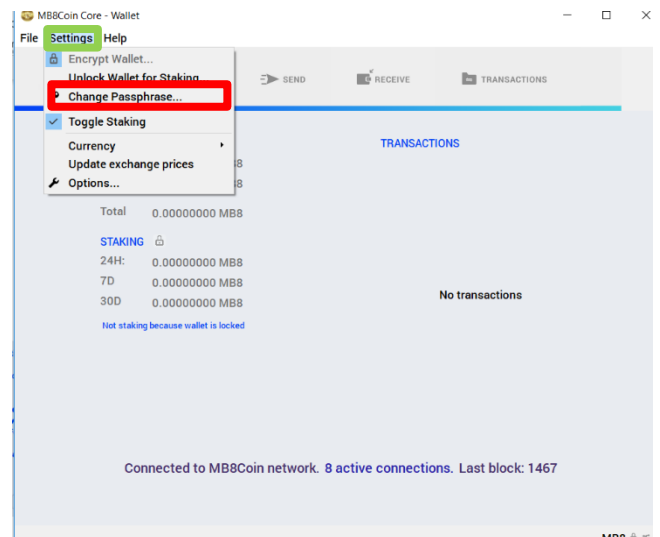
Unlock your wallet by typing the passphrase you set in Step 3 of this document. Once you have entered the passphrase click OK (highlighted in red) to unlock your wallet.



Note: Your wallet will lock once you close the MB8 Coin QT Wallet.

## Step 8

You can change your passphrase by going to the settings tab at the top the MB8 Coin QT Wallet (as highlighted in green) and Click Change Passphrase... (as highlighted in red)



Enter your current passphrase into the first box (as highlighted in green).

Type your new Passphrase into second the box (as highlighted in pink)

Repeat your new passphrase into the third box (as highlighted in red)



END OF DOCUMENT